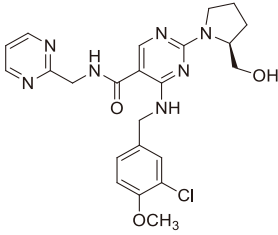


100mg 200mg
50mg

Avanafil Tablets
Afa' nafei Pian

4-[3- -4-]-2-[2S -2-
-1-]-N- -2- -5-



C₂₇H₃₀ClN₇O₃
483.95

2 2%

(N=711)	
	5.6%
	3.5%
	3.4%
	2.1%

1% 2%
URI 3 3 / 12
1%

8 CYP3A4

1.

PDE5

200mg
8.0mmHg 3.3mmHg 1

2 CYP3A4

CYP450 3A4 CYP3A4 CYP3A4

CYP3A4

CYP3A4

3

50mg

24 1

3

PDE5

4 4

	N 100	100mg N 99	200mg N 99
	1.0%	8.1%	12.1%
	0.0%	5.1%	10.1%
	0.0%	3.0%	5.1%
	0.0%	2.0%	3.0%
	1.0%	3.0%	1.0%
	1.0%	3.0%	2.0%
	0.0%	1.0%	3.0%
	0.0%	1.0%	2.0%

Peyronie

4

PDE5

NAION NAION

NAION NAION

2.5-11.8/10 NAION

5 NAION

2.15 95%CI 1.06 4.34 2.27 95%CI 0.99 5.20 NAION

NAION NAION

PDE5 NAION

PDE5 NAION

5 NAION

PDE5

PDE5

6

PDE5

PDE5

PDE5

PDE5

PDE5

PDE5

50mg PDE5 PDE5

PDE5

PDE5

7.

PDE5

3

8 PDE5

9

10.

[NO]

HIV

1 100mg 2 200mg

50mg 100mg 200mg 15 15

1

2

3 CYP3A4

50mg

58.2 24-86

4 2

50mg

2215

153 3 3 493 12 6

56.4 23-88 83.9% 13.8% 1.4% 30.6%

1 1.4% 2.0% 2.0% 1.7%

1.

3 3

2%

1.

3 3

2%

	N=349	50mg N 217	100mg N 349	200mg N 352
	1.7%	5.1%	6.9%	10.5%
	0.0%	3.2%	4.3%	4.0%
	1.1%	1.8%	2.9%	2.0%
	2.9%	0.9%	2.6%	3.4%
	1.1%	3.2%	2.0%	1.1%

1% 2%

URI

2

56.4 23-88 52 712 50mg 100mg

2.8%

100mg

200mg 5 1%

2

1.

12

2.

3.

GC GC

4.

6

<90/50mmHg

5.

<30ml/min

6.

7.

Child-Pugh C

NAION PDE5

cGMP

PDE5

50

2

8 PDE5

9

10.

2

Child-Pugh C

NAION PDE5

10.

1. _____